

MONTHLY MEMBERSHIP PROGRESS REPORT

LOCATION INDIA

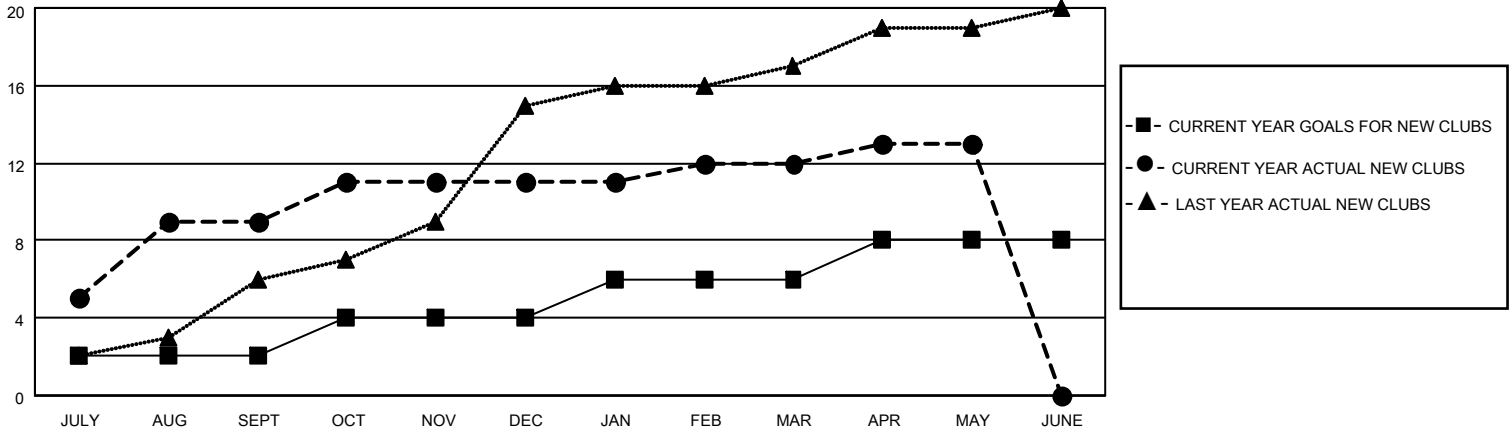
District 321 F

Results as of: 5/31/2022

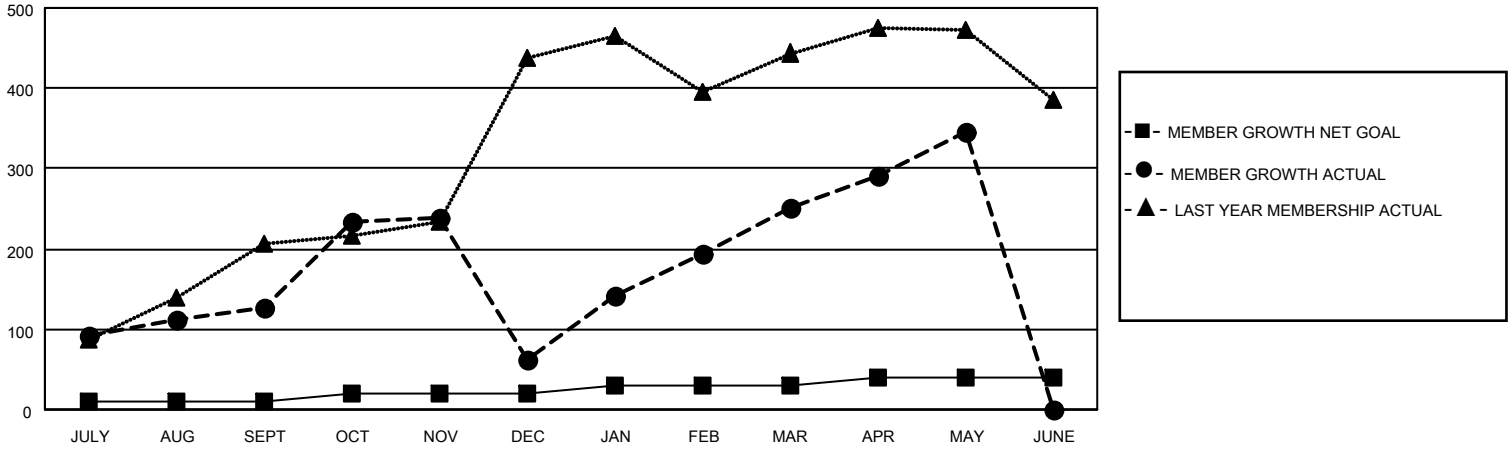
Clubs			
RESULTS FOR 2021-2022			
QUARTER	NEW CLUB GOAL	NEW CLUBS	DROPPED CLUBS
JULY/AUG/SEPT	2	9	6
OCT/NOV/DEC	2	2	8
JAN/FEB/MAR	2	1	1
APR/MAY/JUNE	2	1	0

Members			
RESULTS FOR 2021-2022			
QUARTER	MEMBER GROWTH NET GOAL	MEMBER GROWTH ACTUAL	DROPPED MEMBERS ACTUAL (including transfers)
JULY/AUG/SEPT	10	391	216
OCT/NOV/DEC	10	273	321
JAN/FEB/MAR	10	323	67
APR/MAY/JUNE	10	198	96

GOALS AND ACTUAL NEW CLUBS CUMULATIVE



GOALS AND ACTUAL MEMBERS CUMULATIVE



DROPPED CLUBS: 15

102 CLUBS OF 164 ADDED 1 OR MORE NEW MEMBERS

GENDER DISTRIBUTION

MALE	3,897 (84.70%)
FEMALE	702 (15.26%)
NON BINARY	0 (0.00%)
PREFER NOT TO ANSWER	2 (0.04%)

DROPPED MEMBERS

DECEASED	15
CLUB CANCELLED	211
OTHER	474
TOTAL	700

[CLICK HERE FOR CUMULATIVE MEMBERSHIP DATA](#)

TOTAL FAMILY UNIT MEMBERS	1,789
FAMILY MEMBERS PAYING HALF DUES	1,162